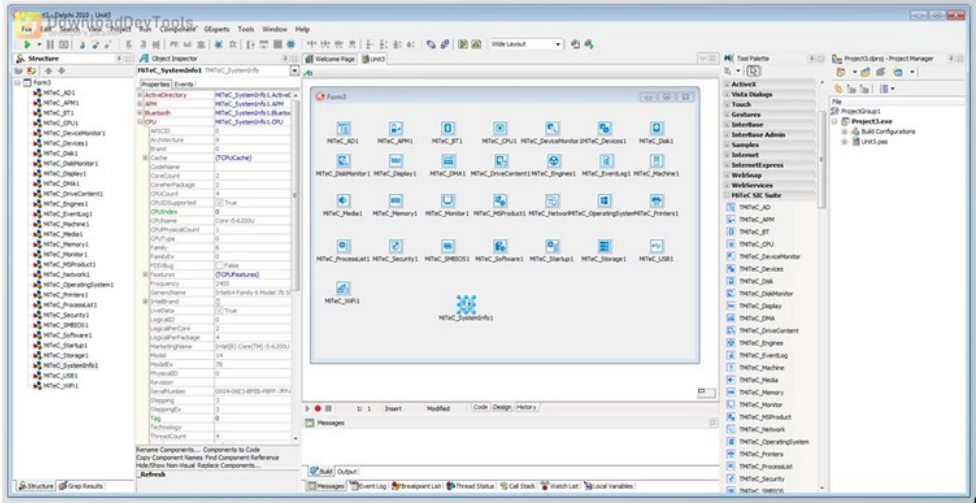
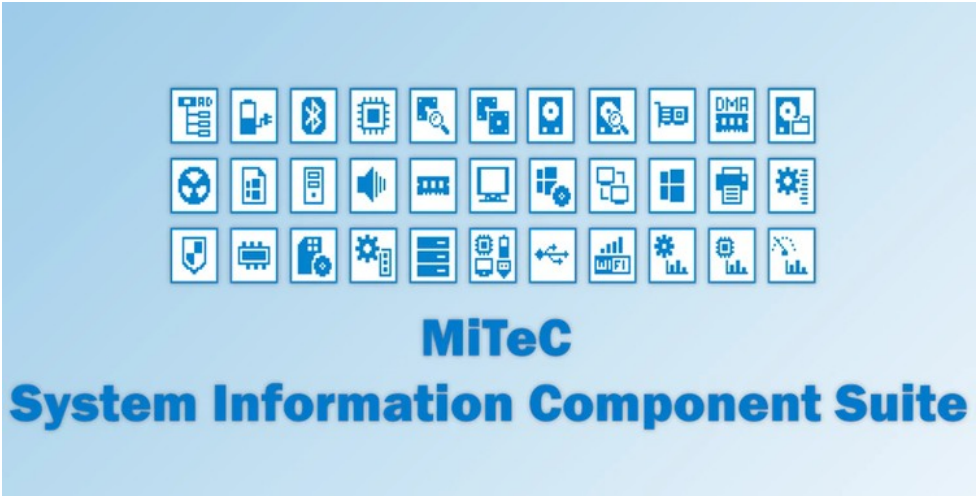




MiTeC System Information Component Suite v15.1.0 for Delphi 6-12 Athens Full Source

2025-04-13 20:24:57 label 我要反馈 下载页面



The is a powerful toolkit for Delphi and Free Pascal developers that makes gathering detailed system information easy. It integrates various components designed to collect and display everything from hardware details, like CPU and memory, to software information, such as installed applications and operating system settings. Whether building applications for monitoring systems, managing hardware devices, or working with network configurations, this suite brings all the necessary tools into one package, simplifying your development process.

The suite also includes real-time monitoring components, which allow you to track running processes, network connections, services, and system performance as they happen. With these tools, you can get live updates on CPU usage, memory consumption, and active network connections. **MiTeC System Information Component Suite** also supports monitoring changes in system hardware, such as USB devices being connected or disconnected, which is ideal for building applications that require event-based responses to system changes.

In addition, the **MiTeC System Information Component Suite** offers support for saving and loading system data in customizable formats, making it easier to track changes over time or share system snapshots with other users. With easy access to everything from Wi-Fi networks and BitLocker status to printer settings and Windows Firewall rules, this component suite covers many use cases, making it an all-in-one solution for developers needing system information and management capabilities.

Key Features of MiTeC System Information Component Suite :

1. Comprehensive System Information: Provides detailed data on CPU, memory, disk drives, network adapters, BIOS, and operating systems.
2. Hardware and Device Management: This function detects and provides information about hardware devices, including USB devices, display adapters, and storage drives.
3. Software and Security Monitoring: Retrieves installed software lists, firewall rules, antivirus status, and Windows updates.
4. Real-time Monitoring: This feature tracks system processes, services, network connections, and performance metrics like CPU and memory usage in real-time.
5. Event-based Triggers Monitor changes in hardware, such as device connections or disk changes, and trigger events



去下载

标签

VCL Components Delphi

when specified actions occur.

- 6. Network Management: Detects and manages network adapters, IP settings, Wi-Fi networks, network shares, and cached credentials.
- 7. Customizable Data Handling: Allows loading and saving system information in customizable formats for later use or analysis.
- 8. Wide Compatibility: Works with various versions of Delphi, providing support for Delphi 2007 through Delphi XE, making it ideal for legacy and modern systems.

资源列表

- download MiTeC System Information Component Suite v14.5.1 for DDelphi 12 Athens + Source Code
- download MiTeC System Information Component Suite v15.1.0 for Delphi 6-12 Athens Full Source



产品数量
已有 42647个



付费会员
已有 1676位



价值评估
商业价值约 ¥6635.87万元



下载数量
已下载 222908次