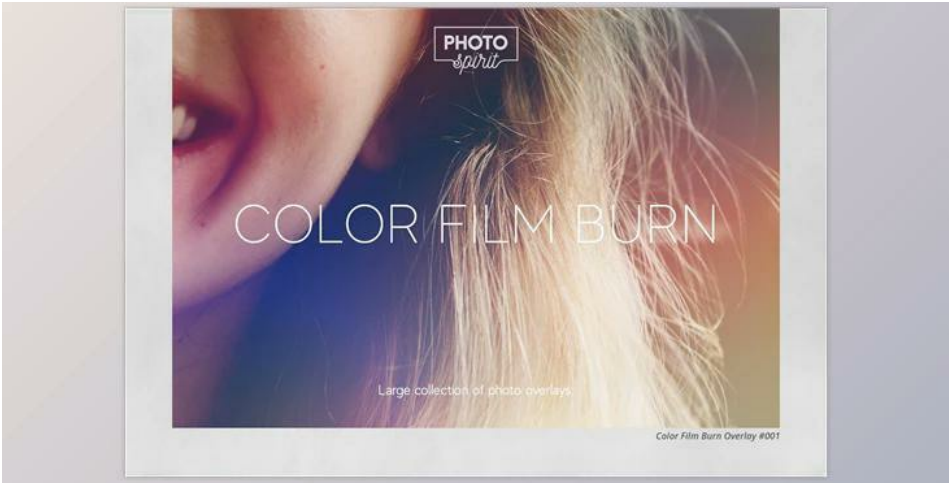




## Color Film Burn Overlays CreativeMarket - 7079448

2025-02-10 17:12:14    [label](#)    [我要反馈](#)    [下载页面](#)



It's suitable for amateurs in addition to professionals. It is suitable for amateurs as well as professionals. Excellent results with black and white photos. To make your life easier you can make use of additional actions to let you select and overlay overlays when you are in screen mode. This feature is compatible with Photoshop as well as Photoshop Elements. The Color Film Burn overlay is accessible in every editor that supports overlays for layers when you are using Screen mode.

### Can beginners easily change photo lighting?

Yes, beginners can also use Color Film Burn Overlays to change the color of photos in Photoshop.

### Where can I download the product?

After subscription, You can download it for free from here.

In case you'd prefer to increase the brightness of the overlay, for instance, on a photo using light alter Blend mode Linear Dodge (add)

### INCLUDED:

- 28 Color Film Burn Overlays JPG 4000x6000
- Overlay Actions.atn
- User Guide.pdf

### What is Color Film Burn Overlays?

Color film burn overlays are visual effects or elements used in video editing and digital filmmaking to replicate the look of old, damaged, or vintage film stock. These overlays add imperfections, distortions, and colorful anomalies to footage to create a nostalgic or retro atmosphere. Film burn overlays are often employed for artistic purposes, such as in music videos, and short films, or to create unique visual styles.

Color film burn overlays can be found in various formats, including video clips, image sequences, or as part of special effects software or plugins. They are applied in video editing software like Adobe Premiere Pro, Final Cut Pro, or DaVinci Resolve by placing the overlay on top of the footage and adjusting blending modes and opacity settings.



去下载

标签

平面设计    Photoshop



产品数量  
已有 42647个



付费会员  
已有 1676位



价值评估  
商业价值约 ¥6635.87万元



下载数量  
已下载 222908次

