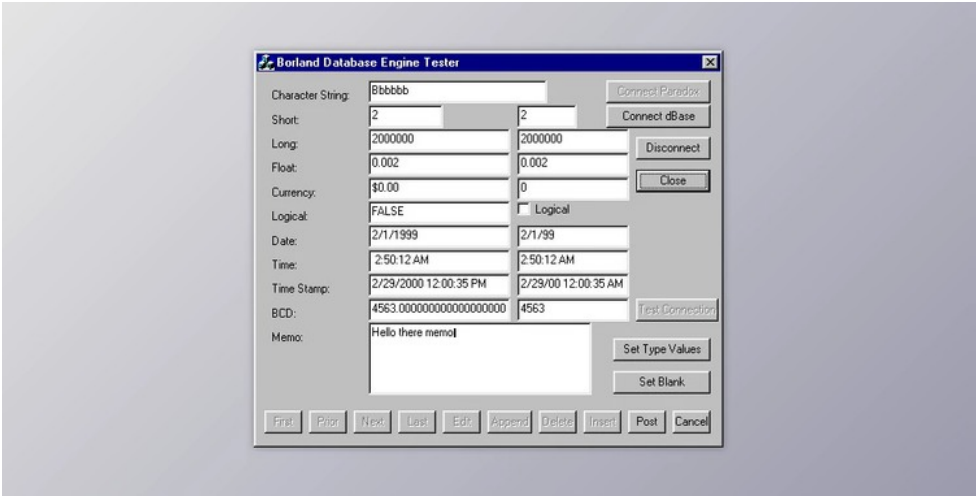


## Borland Database Engine (BDE) v5.2 Retail Full Source

2024-12-18 23:02:30   [label](#)   [我要反馈](#)   [下载页面](#)



Borland Database Engine is Your Most Popular core database engine and connectivity Applications behind Borland Delphi, C++Builder, IntraBuilder, Paradox for Windows, and Visual dBASE for Windows.

Borland Database Engine (BDE) is your most popular core database engine and connectivity applications behind Borland Delphi, C++Builder, IntraBuilder, Paradox for Windows, and Visual dBASE for Windows. The added set of database drivers enables constant access to conventional data sources: Paradox, dBASE, FoxPro, Access, and text databases. You can include Microsoft ODBC drivers as required into this built-in ODBC socket. Optionally, Borland's SQL Links merchandise offers access to a selection of database management systems (DBMS), such as Informix, DB2, InterBase, Oracle, and Sybase.

Borland's Turbo Pascal needed a"database" Toolbox addition; it had been the start of the Borland compiler add-ons that eased database connectivity. Subsequently, the Paradox Engine for Windows -- PXENGWIN -- can be incorporated into a program to ease connectivity into Paradox tables.

The very first DLL-based connectivity engine has been ODAPI Open Database API. It symbolized Borland's effort to centralize connectivity within its own software suite, which comprised the brand new Paradox for Windows 4 and Quattro. With version 4.5 / 5.0 of Paradox for Windows, this database engine has been crystallized as IDAPI.

In 2000, Borland introduced a brand new SQL driver design named dbExpress, which deprecated BDE SQL hyperlinks technology.

In 2014, Embarcadero eliminated the BDE installer out of the Rad Studio XE7 set up, which makes it another download to strengthen the concept, which the BDE was deprecated for quite a few years. Developers using the BDE are invited to upgrade their applications to utilize newer database management technologies such as Embarcaderos FireDAC or even third-party supplied alternatives.

The added set of database drivers enables constant access to conventional data sources: Paradox, dBASE, FoxPro, Access, and text databases. You can include Microsoft ODBC drivers as required into this built-in ODBC socket. Optionally, Borlands SQL Links merchandise offers access to a selection of database management programs DBMS, such as Informix, DB2, InterBase, Oracle, and Sybase.

BDE is object-oriented in layout. At runtime, program developers socialize with BDE by producing different BDE objects. These runtime objects are subsequently utilized to control database entities, like queries and tables. BDEs software program interface API offers direct C and C++ optimized access into the database, in addition to BDEs built-in drivers such as dBASE, Paradox, FoxPro, Access, and text databases.

The center database engine files include a set of DLLs that are wholly re-entrant and thread-safe. Contained with BDE is a pair of supplemental instruments and illustrations with sample code.

BDE process is configured with the BDE Administrator BDEADMIN.EXE.

Contained with BDE is Borlands Local SQL, a subset of ANSI-92 SQL improved to encourage Paradox and dBASE conventional naming conventions for fields and tables known as"columns" in SQL. Local SQL enables you to use SQL to question"neighborhood" conventional database tables that don't live on a database server or as"distant" DBMS servers. Local SQL can also produce multi-table inquiries across the regional normal tables and people on remote SQL servers.

Your BDE API's name is that the"Integrated Database Application Program Interface" or"IDAPI".



去下载

标签

- Components
- VCL
- Delphi



产品数量  
已有 42647个



付费会员  
已有 1676位



价值评估  
商业价值约 ￥6635.87万元



下载数量  
已下载 222908次