



Bentley gINT CONNECT Edition Professional Plus (CL) 10.03.00.09

2025-07-10 16:53:25 [label](#) [我要反馈](#) [下载页面](#)



去下载

标签

Minimum Profile

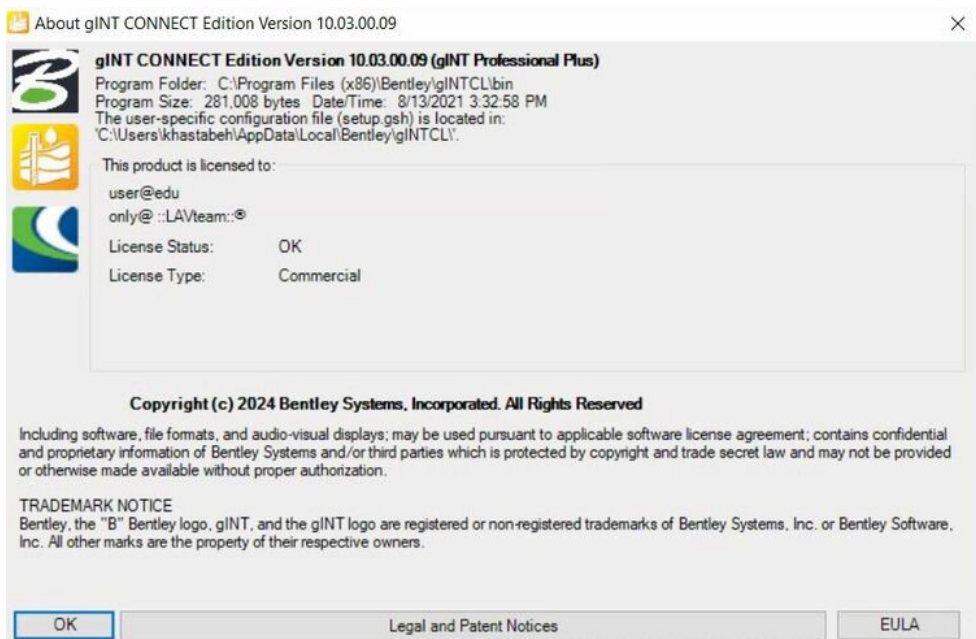
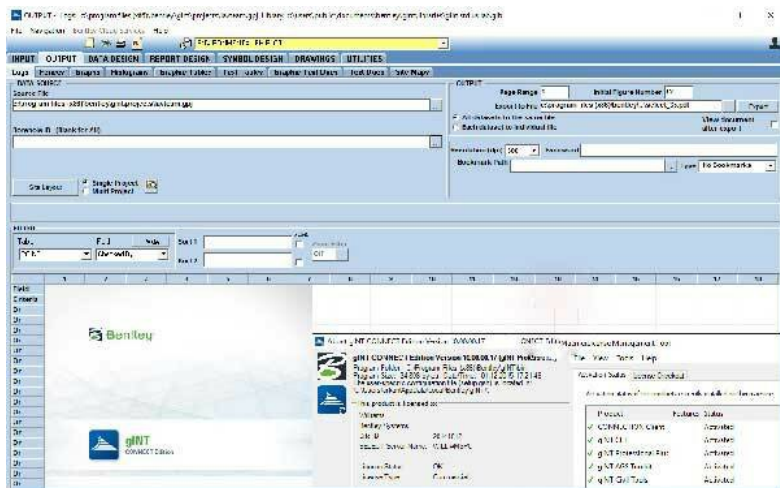
The minimum recommended workstation profile for running MicroStation CONNECT Edition is:

Processor	Intel® or AMD® processor 1.0 GHz or greater. MicroStation is not supported on a CPU that does not support SSE2.
Memory	4 GB minimum, 16 GB recommended. More memory almost always improves performance, particularly when working with larger models.
Hard Disk	9 GB free disk space (which includes the 5.6 GB install footprint for a complete installation)
Video	See the graphics card manufacturer for latest information on DirectX drivers. 512 MB of video RAM or higher is recommended. If insufficient video RAM or no graphics card supported by DirectX can be found, MicroStation attempts to use software emulation. For optimal performance, graphics display color depth should be set to 24-bit or higher. When using a color depth setting of 16-bit, some inconsistencies will be noted. For more information on recommended workstation profiles for MicroStation V8i, see MicroStation System Requirements and Hardware Recommendations .
Screen Resolution	1024 x 768 or higher.

Supported Operating Systems	<ul style="list-style-type: none">Windows 10 (64-bit) - Home, Pro, Enterprise, and EducationWindows 8 (64-bit) - Standard, Pro, and EnterpriseWindows 8.1 (64-bit) - Standard, Pro, and EnterpriseWindows 7 SP1 (64-bit) - Home Basic, Home Premium, Professional, Enterprise, and UltimateWindows Server 2008 R2 SP1(64 bit) - Standard and EnterpriseWindows Server 2012 (64 bit) <p>Note: Windows 7 operating system is supported only if you have its service pack (SP1) installed.</p> <p>Bentley does not support its software running on Microsoft operating systems versions that Microsoft has "retired". For more information see Microsoft's application retirement policy and the Bentley Application Support Lifecycle.</p>
Internet	Internet connectivity is required to use some of the features of the product and installation of software pre-requisites, if not already installed on the machine.
Communications Protocols	<ul style="list-style-type: none">Internet Protocol version 4 (IPv4)Internet Protocol version 6 (IPv6)
Virtualized Environments	Citrix XenApp 6.5 64-bit on Windows Server 2008 R2
Software Prerequisites	<p>The <i>Prerequisites for Bentley Desktop Applications</i> are automatically downloaded and installed to your workstation while you install MicroStation. The contents of the <i>Prerequisites for Bentley Desktop Applications</i>include:</p> <ul style="list-style-type: none">Microsoft .NET Framework 4.5Microsoft Visual Basic for Applications coreMicrosoft Visual Basic for Applications localized <p>Microsoft Internet Explorer, minimum v8.0, recommended v9.0 or later, with 128-bit cipher strength is also required. It is <i>not</i> installed as part of the product pre-requisites.</p>

Copyrights in all components are owned by Microsoft Corporation or one of its affiliates, subsidiaries, or licensors.

Supported Databases The database versions supported by MicroStation are subject to updating after the product release. You can search for [MicroStation CONNECT Supported Databases](#) for the latest information.



inve

产品数量
已有 42647 个

groi

付费会员
已有 1676 位

anal

价值评估
商业价值约 ¥6635.87 万元

dow

下载数量
已下载 222908 次