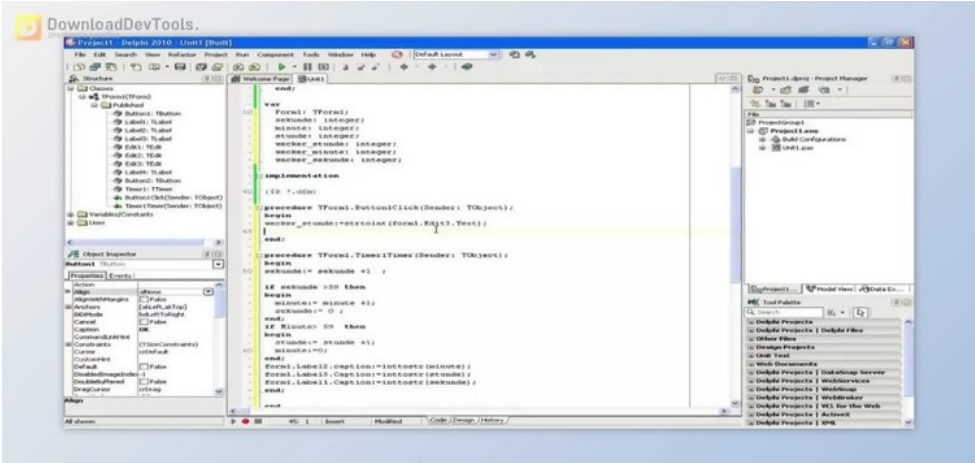




ZylTimer v1.35 for Delphi 4-12 Athens + Patcher

2025-04-11 20:31:33 label 我要反馈 下载页面



ZylTimer, developed by ZylSoft, is a sophisticated tool that provides precise timing solutions within software applications. As a fundamental component for developers seeking granular control over temporal aspects of their programs, ZylTimer offers a comprehensive set of features that enable accurate time tracking, event scheduling, and performance optimization. This versatile timer component is valuable for developers across different programming languages and platforms, ensuring that time-sensitive operations are executed precisely and efficiently.

At its core, **ZylTimer** facilitates high-precision timing functionality, allowing developers to measure and manage time intervals accurately. Whether for tracking execution durations, synchronizing events, or implementing real-time controls, this component empowers developers to fine-tune the temporal aspects of their applications. ZylTimer's intuitive API and flexible configuration options allow developers to seamlessly integrate precise timing into their projects, ensuring that time-related operations are executed reliably and consistently.

ZylTimer goes beyond basic timing functionality by offering advanced features for event scheduling. Developers can leverage the component to schedule and trigger events at specific intervals or predetermined timestamps. This capability is invaluable for applications requiring periodic updates, background tasks, or timed actions. ZylTimer's ability to handle event scheduling precisely contributes to creating responsive and time-aware software systems.

One of the notable strengths of is its cross-language compatibility, supporting various programming languages such as Delphi, C++Builder, and Lazarus. This cross-platform flexibility makes ZylTimer versatile for development teams working on diverse projects across different environments. Whether developing Windows, macOS, or Linux applications, ZylTimer ensures a consistent and reliable timing solution, aligning with modern development practices and prioritizing platform efficiency and consistency.

ZylTimer caters to developers seeking not only precision in timing but also optimization of resource usage. ZylTimer creates applications prioritizing responsiveness and optimal performance by providing efficient time-tracking and event-scheduling mechanisms. As a result, developers can confidently integrate ZylTimer into their projects, knowing that they have a powerful tool for managing time-related operations with precision and ease.

Key Features of ZylTimer for Delphi:

1. **High-Precision Timing:** Accurate measurement of time intervals with high precision.



去下载

标签

- Delphi VCL Components

- 2. **Cross-Platform Compatibility:** Supports various programming languages and development environments, including Delphi, C++Builder, and Lazarus.
- 3. **Event Scheduling:** Capability to schedule and trigger events at specific intervals or timestamps.
- 4. **Customizable Intervals:** Configurable options for defining custom time intervals based on project requirements.
- 5. **Real-Time Controls:** Ability to implement real-time controls within applications, facilitating time-aware operations.
- 6. **Fine-Grained Time Tracking:** Granular control over time tracking for applications requiring detailed temporal control.
- 7. **Consistent Performance:** Contribution to consistent and reliable performance by ensuring accurate timing operations.
- 8. **Resource Optimization:** Focus on efficient resource usage, making it suitable for applications that prioritize optimization.
- 9. **Cross-Language Support:** Compatibility with various programming languages, providing a consistent timing solution across platforms.
- 10. **Intuitive API:** An intuitive, developer-friendly API for seamless integration into software projects.
- 11. **Flexible Configuration:** Configurable options for developers to tailor timing functionality based on specific project needs.
- 12. **Real-Time Applications:** Support for real-time applications, allowing developers to create responsive and time-aware systems.
- 13. **Event-Driven Architecture:** Event-driven architecture for handling timed events and triggers efficiently.
- 14. **Periodic Updates:** Capability to implement periodic updates or background tasks through scheduled events.
- 15. **Consistency Across Platforms:** Ensuring consistent timing and performance across different operating systems and platforms.



产品数量
已有 42647个



付费会员
已有 1676位



价值评估
商业价值约 ¥6635.87万元



下载数量
已下载 222908次