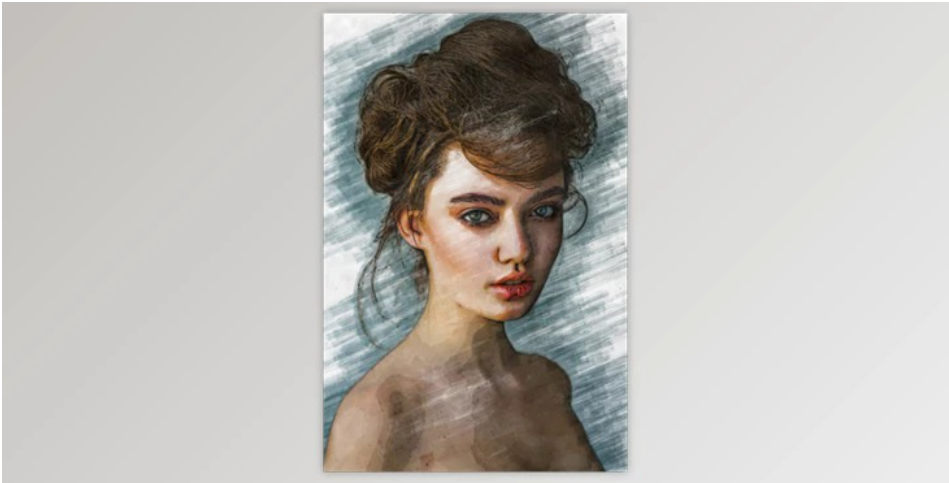




## Marker Sketch By kenoric (Atn, abr, tpl)

2025-02-10 17:10:13    [label](#)    [我要反馈](#)    [下载页面](#)



- You can create a marker sketch effect with your photos using this PS Action. To get an automatically generated effect and a well-organized layer structure, you can press the play button. This will save you time and allow you to get exactly what you need.
- This action works with Photoshop CS6, Photoshop CC14, and Photoshop CC15.
- This is the essence of the action **Not tested in Photoshop CS4 and CS5.**

### The Main File

- Atn, abr. and tpl.
- One file of assistance is included.

### Important

It will not work correctly if you don't follow these steps.

Step 1: Next, go to image/mode/RGB color/8bits channel

Step 2: Adjust your image size

- 300 dpi
- The height and weight range from 3000 pixels up to 4000 pixels.

Step 3: Make certain your layer is not a background in your open PSD. Please navigate to layer/new/background

Step 4: Import all files atn, bar, and tpl into a directory (Please refer to the video guide).

Step 5: Run action.



去下载

标签

Photoshop

平面设计



产品数量  
已有 42647个



付费会员  
已有 1676位



价值评估  
商业价值约 ¥6635.87万元



下载数量  
已下载 222908次