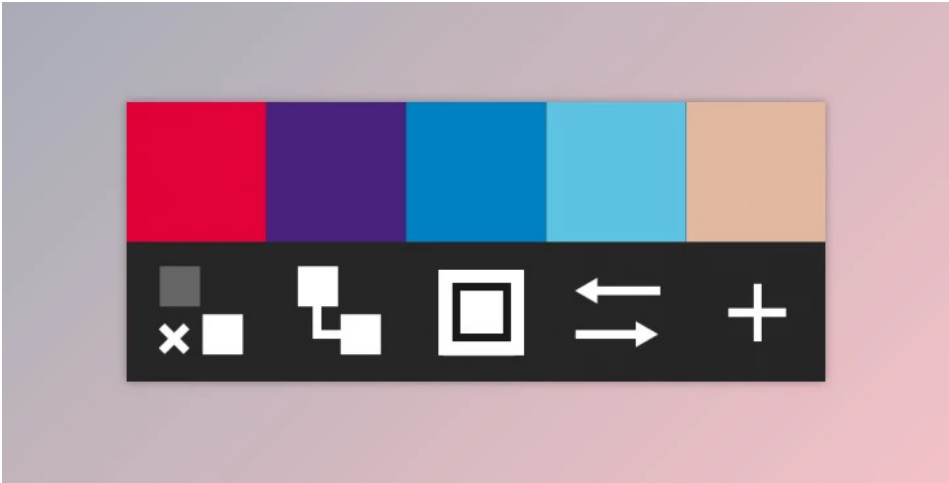


Aescripts Ray Dynamic Color v2.5.10 Full (Win, Mac)

2025-02-10 16:58:26 [label](#) [我要反馈](#) [下载页面](#)



Aescripts Ray Dynamic Color v2.5.10 Full (Win, Mac): The Business Resulting Color Palette for After Effects. Presently, all of the colors on your After Impact job have a predetermined value, even though multiple colors on your landscape have the exact same color value. This makes trying another color or altering almost impossible as you need to alter each individual color of each part in the undertaking.

Gfx plugin details of Aescripts Ray Dynamic Color v2.5.10 Full

The product is in the **After Effects Plugins category from AeScripts**, for more information about this post you can click on the home page link in the sidebar.
To search for similar products to Aescripts Ray Dynamic Color v2.5.10 Full ,

Does this product work on Windowns and Mac Os? We mostly include the operating system in the title. if it is not written, it will work on Windows, and you can for the Mac version.

Ray Dynamic Color does not just provide you a color palette to color together, it may also cause bright links between the color values on your landscape and the color palette. This offers us many choices to manage colors.

- Color your landscape with a single click using the color swatches. Find out How
- Extract colors from the landscape into a palette. Find out How
- Change colors once they are implemented. Find out How
- Shade without"expression hyperlinks". Find out How
- "Connect" and"Unlink" colors to and out of a palette. Find out How
- Color shape coating strokes and fills independently. Find out How
- Alter the colors of 2 color properties. Find out How
- Resolve color differences when consolidating scenes. Find out How
- Choices to randomize and bicycle the colors of a palette. Find out How
- Compact, responsive user interface
- KBar and Overlord integration. Discover How

v2.5.10:

- Fixed bug with sampling colors from Adobe Color Themes palette



去下载

标签

- Plugins AeScripts
- 平面设计 Resources

