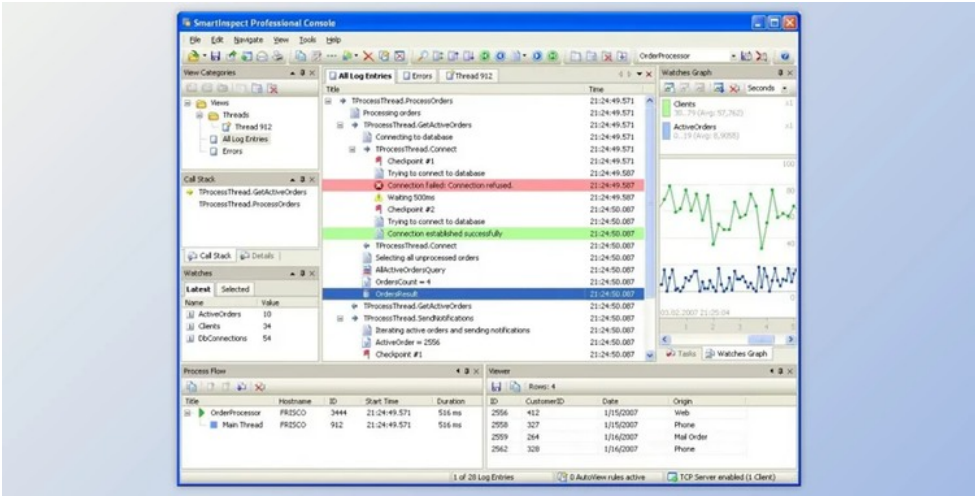




## SmartInspect Professional v3.3.9.166 for .Net & Delphi + Patcher

2024-12-18 23:04:30    label 我要反馈    下载页面



SmartInspect Professional is an advanced logging tool for debugging and tracking .NET, Java, and Delphi software. It enables you to identify bugs, find solutions to customer issues and offers you a crystal clear comprehension of how your software works in different environments and under different conditions. It's possible to easily debug distributed systems, multi-threaded programs, and applications on production systems and even inspect the software that runs in your customer's location.

The web is full of all kinds of programs and applications you could utilize to make your job simpler. One of these is SmartInspect Professional.

It is an advanced logging tool for debugging and tracking .NET, Java, and Delphi applications; it enables you to identify bugs and find solutions to client issues.

SmartInspect is an innovative .NET logging, Java logging, and Delphi logging tool for monitoring and debugging computer software programs. It makes it possible to identify bugs, find solutions to user-reported problems, and provides you a precise picture of how your software performs in various environments. Whether you want to log into the development stage, on manufacturing systems, or at client websites, SmartInspect is the best option.

SmartInspect is the best selection for adding logging assistance into any .NET desktop program, ASP.NET server job, or multi-tier database alternative. Besides the core features accessible by most SmartInspect libraries, the .NET library includes added attributes for ADO.NET, LINQ inquiries, and .NET's Trace and Debug API.

All Java software benefits from the exceptional attributes of SmartInspect. Identify and resolve problems on your J2EE server job or cross-platform desktop application. Always know precisely how your program behaves and what tools it utilizes. And if you are already utilizing Java's built-in logging API, it is possible to port it with SmartInspect easily.

If you're a Delphi for Win32 or C++Builder programmer, you may use SmartInspect's native Delphi library to include high-performance logging into a Windows desktop or support application. Special database log procedures and assistance for Delphi's RTTI create SmartInspect well suited to all sorts of Delphi jobs.

## SmartInspect Professional for .Net & Delphi Great Features:

The program does not take long to set up, and it does not arrive with a complex setup which you would have to finish before you can actually use it. It sports a clean and intuitive graphical interface that has many nice tools available.

SmartInspect Professional is an advanced logging tool for debugging and tracking .NET, Java, and Delphi applications; it enables you to identify bugs and find solutions to client issues.

It includes advanced SmartInspect theories like the library filters, error management, log degrees, and compatibility layers. It clarifies the available protocols, audiences, and IDE code templates and snippets.

The SmartInspect .NET and Java libraries provide courses that serve as a grip and adapter coating for additional (logging) frameworks and courses. SmartInspect includes code templates and snippets for many different IDEs.

It includes choosing to log into your .NET desktop program, ASP.NET server endeavor, or multi-tier database alternative. Aside from the core characteristics of SmartInspect libraries, the indigenous. The NET library includes added features to manage ADO.NET objects and incorporate with. NET's Trace and Debug API.

It permits you to recognize and resolve issues on your J2EE server job or cross-platform desktop program. If you're a Delphi for Win32 or even C++Builder programmer, then you may use SmartInspect's native Delphi library to include high-performance logging into a Windows desktop or support program.



去下载

标签

- Components    Other    .Net

产品数量  
已有 42647个

付费会员  
已有 1676位

价值评估  
商业价值约 ￥6635.87万元

下载数量  
已下载 222908次