



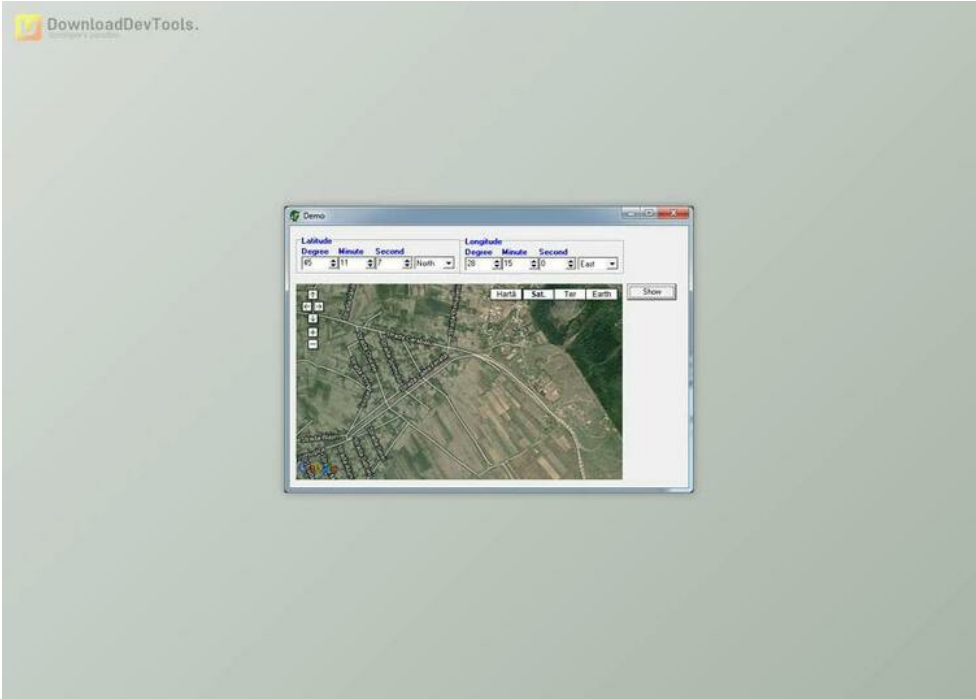
ZylGMaps v2.12 for Delphi 12 Athens + CRACK

2025-04-11 20:31:33

label

我要反馈

下载页面



ZylGMaps is an interactive component designed for Delphi and C++Builder applications, offering the capability to display Google Maps or Open Street Map within your software. Supporting various features such as markers, polygons, polylines, circles, rectangles, popups, and tooltips, **ZylGMaps** provides a comprehensive set of tools for map customization. Additionally, it includes functionalities for geocoding and reverse geocoding and supports events like OnMapClick, OnMapDoubleClick, OnMapMouseMove, OnMapCenterChange, and OnMapZoomChange.

The demo version, fully functional in Delphi and C++Builder IDE, serves as a trial with a nag dialog, which is removed in the licensed version. The package encompasses demo programs and a help file detailing the component and operates using Internet Explorer or Microsoft Edge engines for rendering. Notably, starting in 2018, users are required to use a valid Google Maps JavaScript API key for functionality. Supported operating systems range from Windows 2000 to the latest Windows versions, and compatibility spans various Delphi and C++Builder versions.

Installation involves removing previous versions, unzipping the file, and compiling the provided DPK or BPK files. Users are also instructed to set the library path accordingly. is recommended for use with the "Stop on Delphi exception" option deactivated. Notably, 64-bit support is available for runtime, requiring users to install the 32-bit version and add the Win64 subfolder path for 64-bit platform usage.

Key Features of ZylGMaps :

- 1. Displays Google Maps or Open Street Map
- 2. Supports markers, polygons, polylines, circles, rectangles, popups, and tooltips
- 3. Geocoding and reverse geocoding capabilities
- 4. Various events supported, including OnMapClick, OnMapDoubleClick, OnMapMouseMove, OnMapCenterChange, and



去下载

标签

- VCL
- Delphi
- Components

OnMapZoomChange

- 5. The demo version is fully functional in Delphi and C++Builder IDE, with a nag dialog
- 6. Internet Explorer or Microsoft Edge engines are used for rendering
- 7. Requires a valid Google Maps JavaScript API key starting from 2018
- 8. Compatible with Windows 2000/XP/Server2003/Vista/Server2008/7/8/Server2012/10/11
- 9. Available for Delphi and C++Builder versions ranging from Delphi 6 to the latest releases
- 10. 64-bit support available for runtime use
- 11. Installation involves removing previous versions, unzipping files, and compiling DPK or BPK files.
- 12. Recommended for use with the "Stop on Delphi exception" option deactivated



产品数量
已有 42647个



付费会员
已有 1676位



价值评估
商业价值约 ¥6635.87万元



下载数量
已下载 222908次