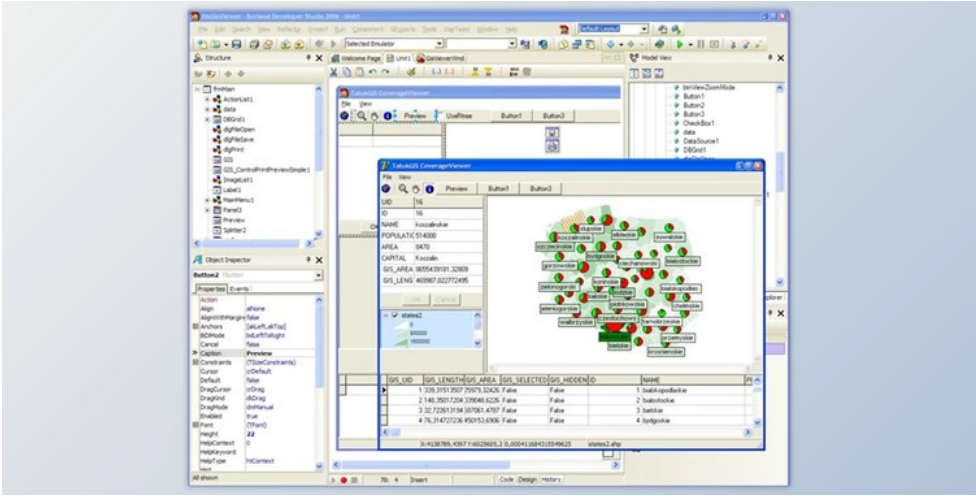




## TatukGIS Developer Kernel for Delphi v11.41.0.21805 (05 May 2020) for D10.3-D10.4 Sydney + Patcher

2024-12-18 23:03:45    [label 我要反馈](#)    [下载页面](#)



TatukGIS Developer Kernel for Delphi has the capability to be obtained as a numerous product as well as a variance which is designed basically for different environments growth, frameworks as well as the operating systems. TatukGIS Developer Kernel for Delphi is considered to be a professional grade, general purpose software development kit GIS that has the capability to be used by the client in the huge selection of the businesses in order to develop a customized software of GIS even add the functionality of it to the existing products for the user and developer. The variant of the SDK is basically available for each and every single document stage and has the ability to provide the user the capacity in order to create GIS for a lot of operating systems that are available. Does the capability to reflect the addition of the shares that are essentially the same comprehensive object-oriented API and they are designed mainly for the development of the professional GIS. Along with no development technology which is favored over another it is available. The formats are basically supported natively and without the process of conversion of the data to the internet format of the TatukGIS. Each edition is basically licensed individually for the user as a standard version or even an enterprise package along with the extension for the spatial databases. The process of licensing per developer along with the free of development realities and there are no run time fees for the user and developer.



去下载

标签

- [Components](#)    [VCL](#)    [Delphi](#)

inve

产品数量  
已有 42647个

groi

付费会员  
已有 1676位

anal

价值评估  
商业价值约 ¥6635.87万元

dow

下载数量  
已下载 222908次