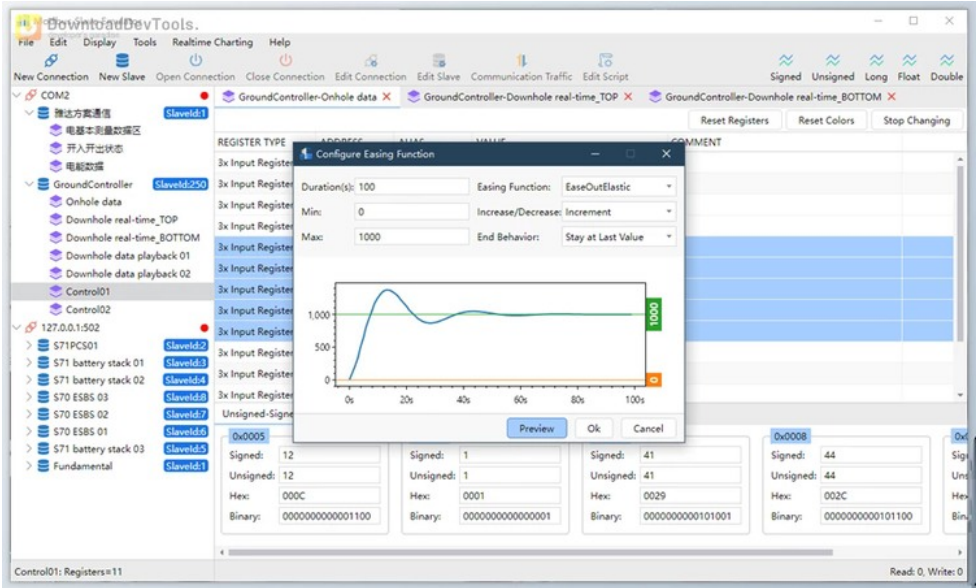




Redisant Modbus Slave Emulator v2.0.2.9 PreActivated

2025-06-11 18:14:21 label 我要反馈 下载页面



is a versatile tool designed to help you quickly and efficiently simulate Modbus networks. It supports various Modbus protocols, such as RTU, ASCII, TCP/IP, and UDP/IP, allowing you to connect multiple slave devices simultaneously. This makes it ideal for testing and troubleshooting Modbus-based systems with ease, no matter the complexity of your network setup. The user-friendly emulator provides powerful features to manage and monitor real-time communication across your network.

With **Redisant Modbus Slave Emulator**, you can view and edit register data in several formats, including signed, unsigned, hexadecimal, and floating-point numbers. The built-in conversion tools allow you to seamlessly convert complex data types like Long and Float into byte sequences for easy management. You can also visualize data trends in real-time by generating charts, which can be exported for further analysis. Redisant’s communication monitoring tools also let you track traffic across serial lines or Ethernet, making debugging straightforward and accessible.

The emulator also supports custom C# scripts for dynamic data generation and includes various easing functions to simulate realistic changes in data over time. With GPU-optimized rendering, the interface remains smooth and responsive while conserving system power. Advanced tools like register group management, address translation, and detailed Modbus function code support make Redisant an all-in-one solution for Modbus simulation.

Key Features of Redisant Modbus Slave Emulator :

- Multiple Modbus Protocols:** It works with RTU, ASCII, TCP/IP, UDP/IP, and RTU over TCP/UDP, allowing for flexible testing environments.
- Multi-Connection & Multi-Device Support:** Set up multiple connections and slave devices at once to simulate complex Modbus networks.
- Rich Data Formats:** Supports 28 formats including Signed, Unsigned, Hex, Binary, Float, and Double; includes a tool for converting Long, Float, and Double types.
- Real-Time Charting:** Generate and export real-time charts to visualize data trends across multiple registers.



去下载

标签

Applications Tools

- 5. **Communication Monitoring:** Track every data frame on serial lines or Ethernet to debug communication issues quickly.
- 6. **Custom Scripts:** Use C# scripts to generate and manipulate data dynamically for more flexible simulation scenarios.
- 7. **Byte Conversion Tool:** Built-in tool to convert complex data types into byte sequences for easier register management.
- 8. **Address Translation:** Easily switch between Modbus protocol and PLC addresses, simplifying the debugging of different systems.
- 9. **Easing Functions:** Simulate realistic changes in register values with various easing functions to mimic real-world data fluctuations.
- 10. **GPU Rendering:** Optimized interface rendering to ensure a smooth user experience with reduced power consumption.

资源列表

download [Redisant Modbus Slave Emulator v2.0.2.9 PreActivated](#)



产品数量
已有 42647个



付费会员
已有 1676位



价值评估
商业价值约 ¥6635.87万元



下载数量
已下载 222908次