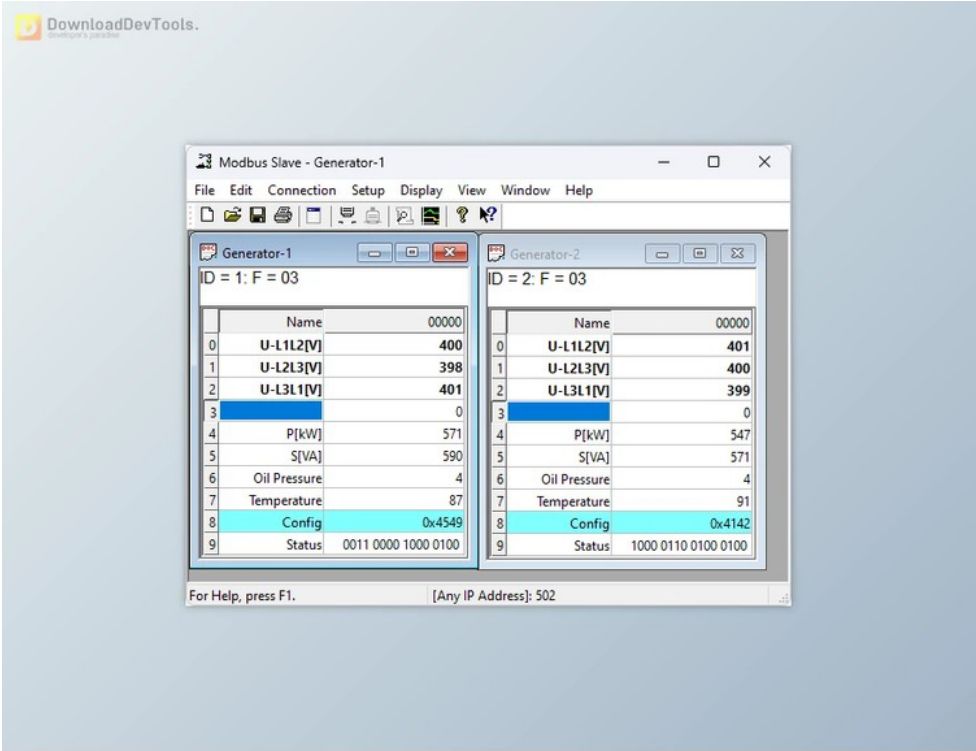




Modbus Slave v9.4.3.2293 + License Key

2024-12-31 16:23:21 label 我要反馈 下载页面



Modbus Slave is a versatile simulation tool designed for PLC programming, allowing users to simulate up to 100 slave devices across 100 windows. It proves particularly useful for expediting programming tasks by providing a platform for testing before the actual slave devices arrive from suppliers. The user-friendly interface, reminiscent of Modbus Poll, ensures a seamless and familiar experience, with each window configurable to represent data from different slave nodes, enhancing flexibility in simulations.

The OLE Automation support is a standout feature, enabling easy interfacing with applications like Visual Basic and Excel using the Macro language VBA. This feature allows users to interpret and display Modbus data based on specific requirements, providing adaptability to diverse programming environments. **Modbus Slave** supports various Modbus protocols, including RTU, ASCII, TCP/IP, and UDP/IP, catering to different industrial communication needs.

In terms of technical features, offers comprehensive monitoring of serial data traffic, diverse display formats, adjustable address bases, and real-time charting. It stands out for its ease of control, allowing users to adjust RS-485 converters effortlessly. The tool also includes detailed video tutorials with voiceovers, facilitating a smooth learning curve for users. Overall, **Modbus Slave** emerges as a powerful and user-friendly solution for Modbus simulation and testing in industrial and automation settings.

Key Features of Modbus Slave:

- 1. Simulates up to 100 slave devices across 100 windows
- 2. Enables PLC programming and testing before receiving physical slave devices



去下载

标签

Tools

Applications

- 3. User interface similar to Modbus Poll for familiarity
- 4. Configurable windows for representing data from different slave nodes
- 5. OLE Automation support for interfacing with Visual Basic, Excel, etc.
- 6. Compatibility with Modbus protocols: RTU, ASCII, TCP/IP, RTU Over TCP/IP, UDP/IP, RTU Over UDP/IP
- 7. Real-time monitoring of serial data traffic
- 8. 28 display formats, including float and double
- 9. Adjustable address base (0 or 1)
- 10. Font and color selection for customization
- 11. Scaling for enhanced control
- 12. Easy RS-485 converter control with RTS toggle
- 13. 6-digit addresses for flexibility
- 14. Conditional color selection
- 15. Real-time charting feature
- 16. Supports Modbus functions such as Read Coils, Read Holding Registers, Write Single Coil, and more

资源列表

download [Modbus Slave v9.3.2.2156](#)

download [Modbus Slave v9.4.2.2242](#)



产品数量
已有 42647个



付费会员
已有 1676位



价值评估
商业价值约 ¥6635.87万元



下载数量
已下载 222908次