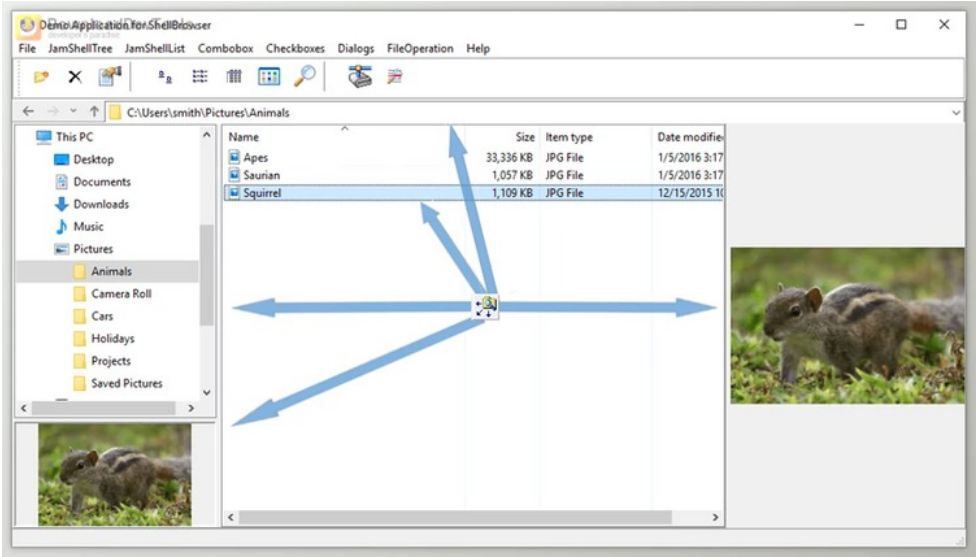




JAM Software ShellBrowser .NET Components v7.0.0.343 + CRACK

2025-04-17 21:57:51 label 我要反馈 下载页面



The **ShellBrowser .NET Components** comprise a collection of UI controls designed to precisely replicate the appearance and behavior of Windows Explorer. These controls, crafted in C#, seamlessly integrate Explorer elements into your applications or create a personalized Explorer interface. These components, tailored explicitly for Windows Forms, support various languages such as C# or VB.NET.

ShellBrowser .NET Components extend compatibility across all current Windows versions (32-bit and 64-bit) and seamlessly integrate with Visual Studio. Whether you wish to embed Explorer components within your applications or construct a bespoke Explorer interface, these components facilitate emulating familiar Windows Explorer features. This includes context menus, left and right pane Explorer windows, thumbnails, virtual folders, and shell extensions. By leveraging the , users gain convenient access to the full spectrum of Windows Shell functionality.

Key Features of JAM Software ShellBrowser .NET Components:

- 1. **Enhance Your .NET Application with Drop-in Shell Functionality**
 - 1. Includes a comprehensive set of visual and non-visual controls for Visual Studio.
 - 2. Create Explorer clones within minutes with the ShellTreeView, the ShellListView, and the ShellControlConnector or the ExplorerBrowser control.
 - 3. Easy drop-in: Drop the UI components on your forms or dialogs.
 - 4. All captions, e.g., the column headers in the ShellListView, are from the system in the active language.
 - 5. Icons and thumbnails are determined in background threads. This optimizes the reactivity and does not slow down the speed of the user interface.
 - 6. Integrate the preview pane introduced with the Windows Explorer with the ShellFilePreview component and let the ShellChangeNotifier inform you about relevant shell events.
 - 7. Use Windows functionality without struggling with p/involking the respective Windows APIs, COM Objects, and Interfaces.
- 2. **Look-and-Feel of the Windows Explorer**
 - 1. The ExplorerBrowser provides a complete, configurable Windows Explorer view.



去下载

标签

- Components .Net
- Winforms

- 2. Windows Shell context menu
 - 3. Drag-and-drop with the Windows Explorer and similar applications.
 - 4. Different view styles: The ShellListView supports small icons, large icons, lists, details, and thumbnails.
 - 5. Overlay icons are supported.
 - 6. The ShellBrowser .NET Edition also supports installed Shell extensions supported by Windows Explorer.
 - 7. The background context menu in the ShellListView is supported.
3. **How-To Guides**
- 1. Comprehensive documentation of the controls.
 - 2. Sample Projects for basic and advanced features of ShellBrowser .NET Edition included.
4. **100% C# Code - Transparent Costs**
- 1. The components are based on the .NET Framework Controls and are written in 100% C# code; no additional DLLs or ActiveX controls are necessary.
 - 2. The ShellBrowser .NET Edition is royalty-free and involves no runtime fees.
 - 3. Supports Visual Studio 2010 and higher.
-
- 1. **ShellTreeView**: Explore the Microsoft Windows shell namespace in a tree format, mirroring the appearance and functionality of Windows Explorer's left pane with the ShellTreeView component.
 - 2. **ShellListView**: Display folder contents in a list format, emulating the appearance and behavior of Windows Explorer's right pane, and tailor it to your specific requirements using the ShellListView component.
 - 3. **ExplorerBrowser**: The ExplorerBrowser component offers a comprehensive Windows Explorer experience, seamlessly integrating a wide array of features into your application.
 - 4. **ShellSearchEdit**: The ShellSearchEdit includes the search field found in Windows Explorer, connecting it to the ShellList or ExplorerBrowser to define the scope and display search results.
 - 5. **ShellComboBox**: Employ the ShellComboBox to create a fully customizable Windows Explorer combo box for shell items in your application.
 - 6. **ShellAddressBar**: Replicate the breadcrumb bar from Windows File Explorer with the ShellAddressBar, enhancing navigation in your application.
 - 7. **ShellHistoryToolBar**: Enhance your application with a navigable browsing history using the ShellHistoryToolBar component.
 - 8. **ShellFilePreview**: Allow users to preview file contents without opening them using the ShellFilePreview control, which connects to the IPreviewHandlers.
 - 9. **ThumbnailImage**: Utilize the ThumbnailImage controller to showcase thumbnail images of files or folders using the same API calls as Windows Explorer.
 - 10. **FileList**: The FileList component can aggregate files or folders into a single list or facilitate search operations.
 - 11. **DriveList**: Easily compile a list of network and local drives, displaying drive capacity and free disk space with the DriveList component.
 - 12. **PathEdit**: Enable users to input or browse for folder or file paths in a dialog using the PathEdit component.
 - 13. **ShellHistoryToolStrip**: Incorporate a browsing history and navigation buttons (back and forward) akin to those in Windows Explorer with the ShellHistoryToolStrip component.

资源列表

- download JAM Software ShellBrowser .NET Components v6.4.0.135
- download JAM Software ShellBrowser .NET Components v7.0.0.343



产品数量
已有 42647个



付费会员
已有 1676位



价值评估
商业价值约 ¥6635.87万元



下载数量
已下载 222908次