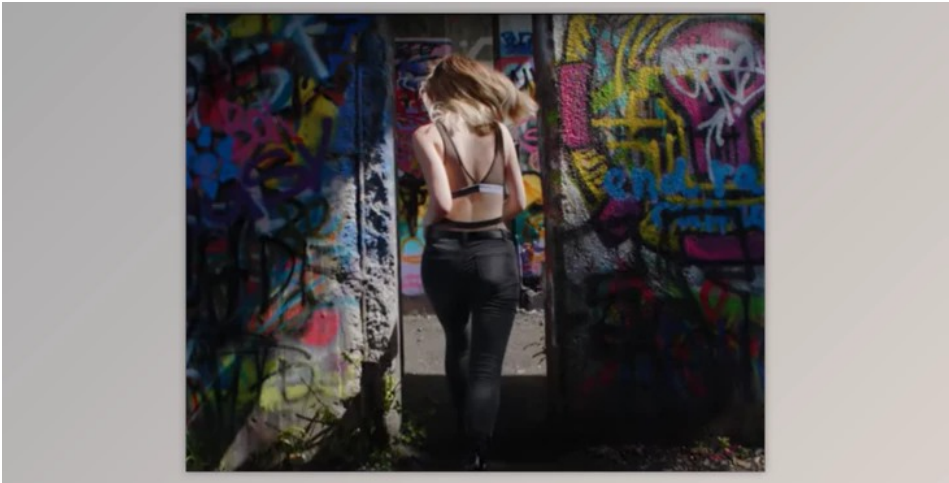


Emotive Color GHALEX LUTs

2025-02-10 17:03:12 [label](#) [我要反馈](#) [下载页面](#)



How to give a beautiful effect to the photo by creating color on the images using rich shade?

You can use "Emotive Color GHALEX LUT" for editing.

Where can I download the product?

After subscription, You can download it for free from here.

The New Standard.

- The **Emotive Shade** 'Alex' transformation and calculated Matrix PowerGrade exactly alter XT4, GH5, Pocket 4K / 6K, along with Ursa footage to match the color science of this Arri Alexa, with no compromise. This is accomplished without artifacts, even while presenting a sleek, natural roll-off.

Rich Shade.

Grade friendly.

- The color conversion ends in natural color reproduction, in which every color goes to live, and also the brightness levels during each color place just perfect. Fantastic color separation ensures that a lively and dramatic rendition of this scene. Amazing looking skin tone is now the star of this series.

Highlights.

The same as the movie.

- Much like the Alexa and movie, the color conversion transforms rough adjustments to cut right to a slow and natural roll-off. Hue spins which are the end result of unequal RGB station trimming are removed while keeping leftover subtle detail below white.

Artifact Free.

Sterile Shade.

- Carefully executed and thoroughly analyzed, the Conversion doesn't have any artifacts or other issues. Every vulnerability and Colour was tested under an intense light to guarantee the clean functionality of this Conversion in almost any circumstance.

Here's a concise guide to unleashing the full potential of Emotive Color (EC) for your camera. EC offers three display-ready variations of color conversion (Main/Soft/Linear) and one data format variation (LogC). Each clip should utilize only one of these variations. While EC is designed for white balanced VLog, it also supports HLG and Cine-D through precise conversions to VLog.

Four Variations:

- Main:** The core EC variation features the highlight ceiling of the film 'Sicario' with full film-derived saturation. It utilizes a LogC conversion with the 2018 revised Arri RGB display primaries. Aim for moderate exposure to avoid overexposure.
- Soft:** An alternate EC variation with a similar highlight ceiling to 'Sicario' but with reduced contrast and saturation. Again, use the LogC conversion with the 2018 Arri RGB display primaries and aim for moderate exposure.
- Linear:** This option provides a linear luma alternative to EC, offering linear highlight handling, increased contrast, and film-derived saturation. Use the LogC conversion with the 2018 Arri RGB display primaries. It serves as a direct alternative to the LogC+R709 route.
- LogC:** This is the native data format of the Alexa, storing the full dynamic range and gamut of the sensor. Ensure to pair it with a LogC-intended display look-up table, such as those provided by Arri or film conversions meant for LogC.

Follow these guidelines to maximize the capabilities of Emotive Color for your camera.



去下载

标签

平面设计

LUTS

Premiere Pro

What is Emotive Color GHALEX LUTs?

The Emotive Color GHALEX LUTs are a set of lookup tables (LUTs) designed by filmmaker James Miller under the Emotive Color brand. These LUTs are specifically tailored for use with Panasonic GH5/GH5S cameras and aim to provide a cinematic color grading solution.

LUTs are essentially mathematical formulas that map one color space to another. In the case of GHALEX LUTs, they are designed to transform the color space of footage captured by Panasonic GH5/GH5S cameras into a more cinematic and emotionally evocative look. This can involve adjustments to contrast, saturation, hue, and other color parameters to achieve the desired aesthetic.



产品数量
已有 42647个



付费会员
已有 1676位



价值评估
商业价值约 ¥6635.87万元



下载数量
已下载 222908次