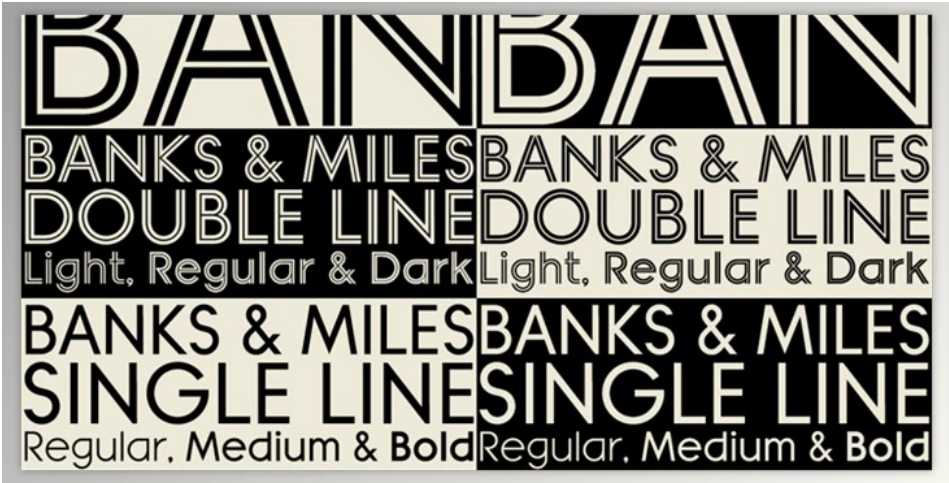




### Banks & Miles Font Family – 9 Fonts

2025-02-10 16:47:35    [label 我要反馈](#)    [下载页面](#)



K-Type's "Banks and Miles" fonts are influenced by the geometric, monoline typeface designed to be used by the British Post Office in 1970 by London design firm Banks & Miles, a project that was conceived and directed by its partner John Miles, and which included the Double Line and Single Line the alphabets. The new typeface, which is digital, is a revision and expansion to both of the alphabets.

### Gfx plugin details of Banks & Miles Font Family – 9 Fonts

For more information about this post you can click on the home page link in the sidebar.  
To search for similar products to Banks & Miles Font Family – 9 Fonts,

Banks & Miles Double Line is available in three different weights: Regular, Light, and Dark. These variations are made by altering the width of the line.

Banks & Miles Single Line is a way to transform the lesser-used companion without into a three-weight family: Regular, Medium, and Bold, each sporting an optically corrected Oblique.

Although the 'Banks & miles Double Line' and 'Banks and Miles Single Line' fonts are built on those initial Post Office letterforms, glyphs were created from scratch and incorporate a variety of modifications and adjustments that are not impertinent, for instance, narrowing the large Z and reducing the length of the K. There are many differences in those of the Post Office Double and Single Line styles K-Type has sought to create a more consistent style across the two. For example, a large apex of the lowercase W of the Double Line is pointed to match the uppercase W and the Single Line's W/W. Additionally, the gently sloped hook of the Single Line's lowercase J is utilized in both families. Single Line's original R and k, which were a bit simplified to create their more impressive Double Line forms, and while the modern Single Line fonts are modestly reduced where necessary, they retain the round, circular shape in The Double Line.

A variety of characters that weren't part of the original plan like @, ss, and currency symbols, are being redesigned, as well as a complete collection of Extended Latin characters has been included. The new fonts boast unique features such as the charming teardrop-shaped bowl the letters a,b,d,g, p, and q, as an overall elegance that isn't always achievable with inline fonts.

It is believed that the Post Office Double Line alphabet was in use from the beginning of the 1970s, with a variety of colors to signify the different parts that comprised the Post Office business which included counter services, telecommunications, as well as the Royal Mail. After that, the Post Office was split into separate companies in the 1990s Post Office Counters and Royal Mail continued use of the lettering. A variant can still be seen in the Royal Mail cruciform logo.



去下载

标签

平面设计    Other

inve

产品数量  
已有 42647个

grou

付费会员  
已有 1676位

anal

价值评估  
商业价值约 ￥6635.87万元



下载数量

已下载 222908次