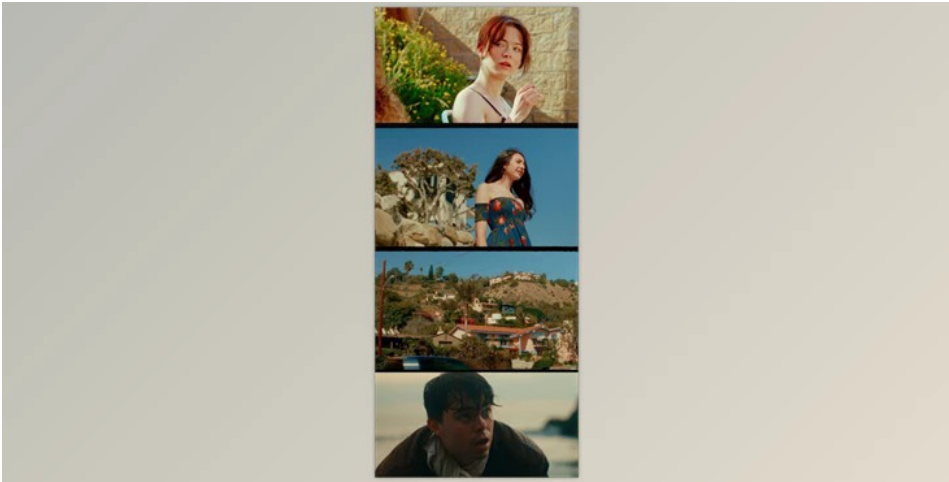
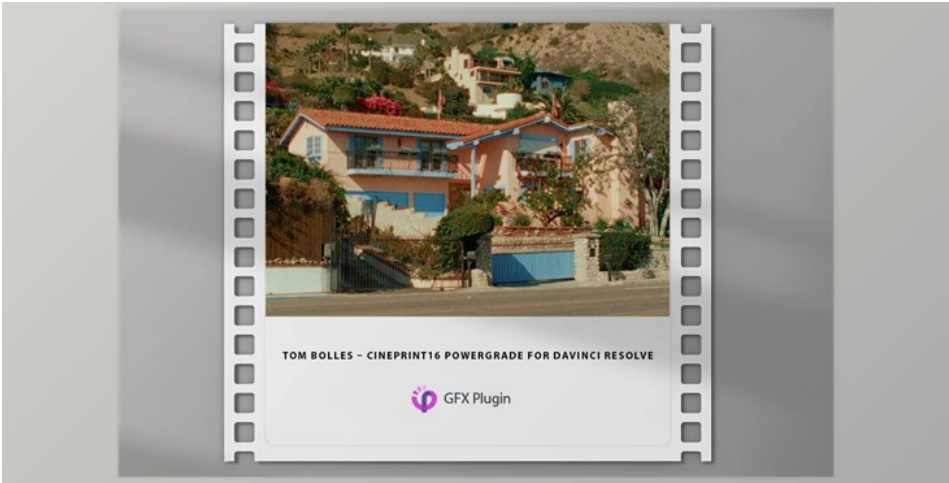




Tom Bolles – Cineprint16 Powergrade for Davinci Resolve

2025-02-10 16:52:18 [label](#) [我要反馈](#) [下载页面](#)



- 1.
- 2.

CinePrint16 is a film emulator PowerGrade to Davinci Resolve.

Create a realistic 8mm, 16mm, or 35mm look with the built-in Cineon Negative, Fuji/Kodak printing film, and classic 1960s film looks.

Gfx plugin details of Tom Bolles – Cineprint16 Powergrade for Davinci Resolve

The product is in the **LUTS category**, for more information about this post you can click on the home page link in the sidebar. To search for similar products to Tom Bolles – Cineprint16 Powergrade for Davinci Resolve,

The digital download includes versions 1 and 2 of PowerGrade, Film Border PNG images, as well as an in-depth User's Guide in PDF.

CinePrint 16 is a PowerGrade for Davinci Resolve that mimics the aesthetic qualities of analog film.

The PowerGrade format makes CinePrint 16 a versatile, customizable, and camera-agnostic tool for cinematic look creation.

It is important to note that CinePrint 16 is not a technical transform or a one-to-one recreation of any existing film stock. Instead, it is a look creation tool that was developed to taste with the goal of being both filmic and customizable so that users can create their unique film emulations.

The CinePrint 16-node tree is a great resource for colorists looking to design and explore custom celluloid film looks.

Installation:

The download is a compressed .zip file containing the User Guide .pdf, the .drx PowerGrade, and the .dpx thumbnail.

- 1. Open the .zip file



去下载

标签

LUTS 平面设计

- 2. Move the files to wherever you want them stored.
- 3. Open Davinci Resolve and go to the Color page
- 4. select the sidebar icon below in the Gallery tab to show the Still Albums sidebar.
- 5. Select the PowerGrade one still album.
- 6. Right-click in the gallery window background and select Import.
- 7. Navigate to where you stored the .dpx and .drx files and import them.
 - a. If the files are greyed out, click the options button at the bottom of the import window, select .dpx or .drx from the list, and try again.
- 8. Once imported, the PowerGrade can be applied to the selected shot by the middle mouse button clicking on the thumbnail, or right click -> Apply Grade.

Node Tree Overview

The CinePrint 16-node tree can be conceptually divided into three sections:

- The top section is for footage preparation and correction. Spatial adjustments (denoise, grain, halation, dust) are made here.
- The middle section is space allocated for the user to do most of their creative grading, such as primary and secondary adjustments.
- The bottom section is where the footage is finally brought into a celluloid film look. Color adjustments (hue, saturation, tonal response) are made here.

The order of operations within the pipeline is certainly important, as it has an effect on the final look. While this guide contains suggestions for working with this pipeline, it is useful to remember that there are no hard rules. Ultimately, you can do whatever you want with the power grade, and the only thing that matters is that you're happy with the final look!

What is Cineprint16 Powergrade for Davinci Resolve

"Cineprint16 Powergrade" for DaVinci Resolve might be a collection of color grading adjustments specifically designed to mimic the visual characteristics of a 16mm film stock, such as its color tones, contrast, and grain. This Powergrade could offer a quick and efficient way to apply this particular film look to your digital footage within the software.



产品数量

已有 42647个



付费会员

已有 1676位



价值评估

商业价值约 ¥6635.87万元



下载数量

已下载 222908次