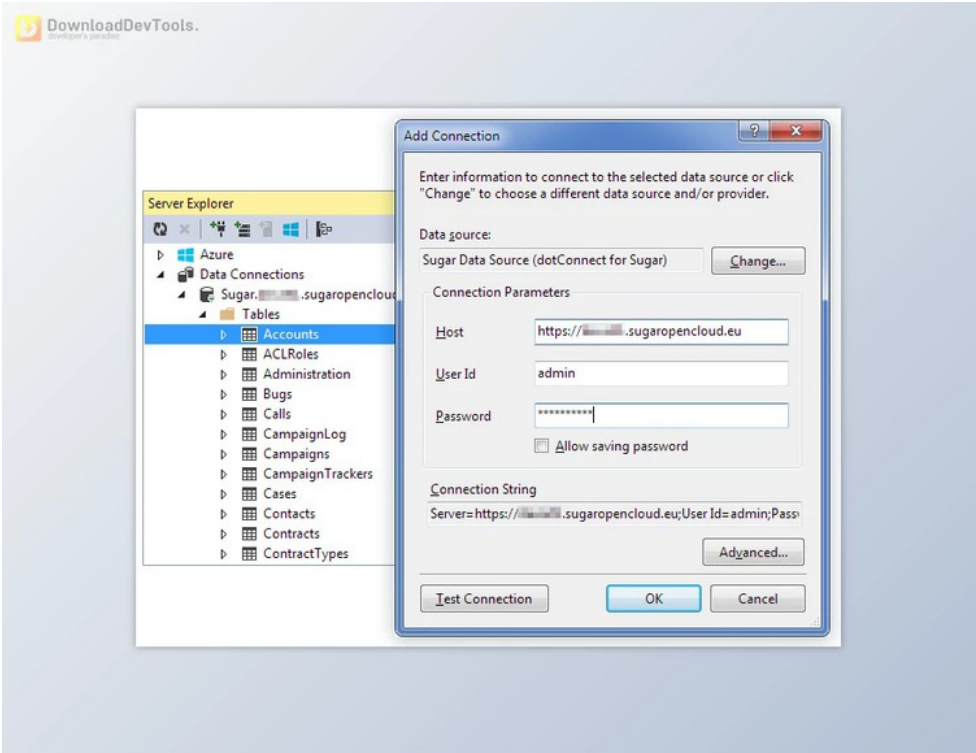




Devart dotConnect for SugarCRM Professional v3.0.0 (18 Dec 2025) + Patcher

2026-01-12 11:50:08 [label](#) [我要反馈](#) [下载页面](#)

本站所有资源来源于网络，均不支持商用，仅供个人学习与研究。



streamlines the incorporation of SugarCRM data into .NET applications by offering seamless integration with standard ADO.NET and Entity Framework interfaces. With familiar ADO.NET classes like SugarConnection and SugarCommand, developers can swiftly access and manage SugarCRM data without requiring extensive learning curves. This simplifies the development process, reducing the necessity for extensive code writing and allowing developers to focus on creating robust applications.

The tool's powerful design-time editors and seamless integration with Visual Studio enhance productivity by simplifying tasks such as connecting to SugarCRM and binding data grids. Following straightforward steps in Server Explorer, developers can establish connections to SugarCRM and input credentials and begin working with data directly within the Visual Studio environment. Smart tags make Data binding effortless, enabling developers to configure components without manual coding.

Furthermore, **Devart dotConnect for SugarCRM Professional** offers the convenience of SQL query support, enabling developers to execute operations like SELECT, INSERT, UPDATE, and DELETE using familiar SQL statements. This eliminates the need to navigate complex SugarCRM APIs, providing a straightforward approach to data manipulation. Additionally, seamless integration with Entity Framework facilitates support for LINQ to Entities and simplified data persistence, further enhancing the tool's versatility and usability within .NET applications.

Key Features of Devart dotConnect for SugarCRM Professional :

1. Seamless integration with standard ADO.NET and Entity Framework interfaces



去下载

标签

- Components ASP.Net
- .Net

2. Familiar ADO.NET classes for quick access to SugarCRM data
 3. Simplified development process with reduced need for extensive code
 4. Powerful design-time editors for enhanced productivity
 5. Tight integration with Visual Studio for effortless workflow
 6. Simple connection setup in Server Explorer
 7. Easy data binding with smart tags
 8. Support for SQL queries, including SELECT, INSERT, UPDATE, and DELETE operations
 9. Elimination of complexity associated with SugarCRM APIs
 10. Integration with Entity Framework for LINQ to Entities support
 11. Simplified data persistence with a single SaveChanges() call
 12. Bundled visual designer, Entity Developer, for enhanced Entity Framework support
-

资源列表

[download](#) Devart dotConnect for SugarCRM Professional v3.0.0 (18 Dec 2025) + Patcher